



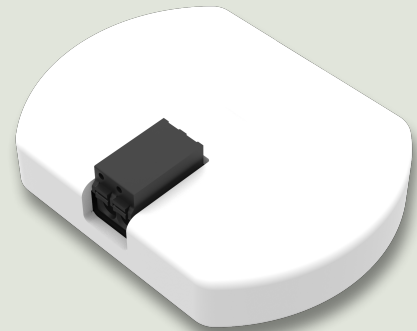
RAYBASED

Dali Converter

Interface between Smart Controller and a DALI circuit

The Dali-converter is a full featured Dali Master device and power supply. It connects to a Smart Controller and extends its' functionality to control external devices using the Dali lighting protocol. The functionality is split between the Smart Controller and the Dali Converter in such a way that bus control is handled by the Dali-converter, while algorithmic control, i.e. light dimming, is taken care of by the Smart Controller, providing full freedom in implementing various control schemes.

Dali standard is the most dependable and flexible way to control modern LED luminaries, providing not only dimming but also more advanced features like color and light temperature control.



Features

- Master / slave device for Dali
- Fully galvanically isolated Dali interface.
- Power provided by the connection to the Smart Controller
- Bus fault feed-back

Specifications

Standards

- Electrical safety testing acc to EN 60730-1
- CE Certified. Complies with applicable European standards regarding electrical safety, EMC immunity and emissions.
- EN 61000
- ETSI EN 301489
- EN 55016

•

Power / Performance

- Operating voltage: 12V. Powered by a Smart Controller
- Typical power consumption: <0,1W
- Power consumption at full load: 0,6W

Communication

- Connects to a Smart Controller using security protected serial communication.

Load

- 15V Dali bus voltages. Output short circuit protected. Survives accidental connection to line voltage.
- Dali output can sink the maximum bus current according to standard, but internal power supply can handle a maximum of 30 standard loads. External power supply can be used for higher capacity.
- Dali connection galvanically isolated up to 3500V.

Environment

- Climatic withstand according to EN 50491-2
- Ambient operating temperature: -40 to +60 Centigrade.
- Maximum 90% non-condensing relative humidity.

Connections

- Raybased standard 6 pole Erni connector for communication to attached Smart Controller. Flat ribbon cables of various lengths are available.
- Two pole Wago push-in connectors for 1,5 mm² installation wire.
- Designations: Dali D+ and D-

Dimensions

