

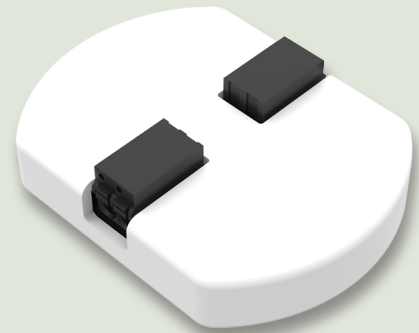
# RAYBASED

## L-Puck™

Integration unit for Dali and 0-10V

The Raybased L-puck connects to an R-puck and extends its' functionality to control external devices using the Dali lighting protocol or generic 0-10V analog control. The L-puck is a full featured Dali Master device. The functionality is split between the R- and L-puck in such a way that bus control is handled by the L-puck, while algorithmic control, i.e. 0-10V thermostat control, is taken care of by the R-puck, providing full freedom in implementing various control schemes.

In modern light control the Dali and 0-10V standards cover the vast majority of control situations. The 0-10 V output also provides convenient control of valves and other devices in HVAC systems.



## Features

- Dali master device
- Fully galvanically isolated Dali interface. Requires external Dali bus power supply
- 0-10V output capable of sourcing or sinking up to 50 mA
- Power provided by the R-puck connection
- Bus fault feed-back

# Specifications

## Standards

- CE Certified. Complies with applicable European standards regarding electrical safety, EMC immunity and emissions.
- Electrical safety protection type (according to IEC 60529): IP20.
- EMC CE immunity to interference EN50082-2.
- EMC CE emission of interference EN50081-1.

## Power / Performance

- Operating voltage: 12V. Powered by R-puck.
- Typical power consumption: <0,1W.

## Communication

- Connects to R-puck using security protected serial communication.

## Load

- Dali standard bus voltages. Output short circuit protected. Survives accidental connection to line voltage.
- Dali output can sink the maximum bus current according to standard.
- Dali connection galvanically isolated up to 3500V.
- 0-10V output sinking and sourcing up to 50 mA over the full output voltage range.
- Output is not galvanically isolated and output voltage is referenced to the neutral line of the connected R-puck.

Thus, connected 0-10V inputs must be isolated for correct functionality. It is protected from temporary overvoltages, but does not tolerate connection to line voltages.

## Environment

- Climatic withstand according to EN 50491-2
- Ambient operating temperature: -40 to +60 Centigrade.
- Maximum 90% non-condensing relative humidity.

## Connections

- Raybased standard 6 pole Erni connector for communication to attached R-puck. Flat ribbon cables of various lengths are available.
- Dali: Four pole Wago push-in connectors for 1,5 mm<sup>2</sup> installation wire.
- 0-10V: Two pole Wago push-in connectors for 1,5 mm<sup>2</sup> installation wire.
- Designations
- Dali: D+ and D-
- Analog: GND and ANout

## Dimensions

