



RAYBASED

## Modbus Converter

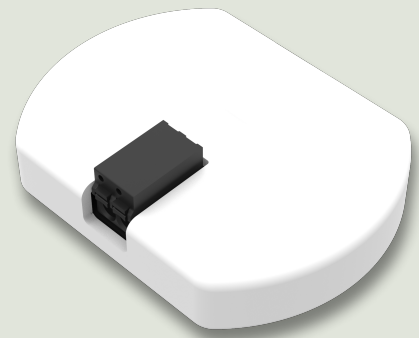
### Translator For Modbus RTU

The Modbus Converter connects to a Smart Controller and extends its functionality to control external devices using the Modbus RTU protocol. It is a full featured Modbus RTU master unit, which is galvanically isolated to 3750 V. It requires no common ground connection. The bus is efficiently protected from voltage surges, to enable its use in industrial environments.

It is typically used to connect to other smart devices like PLC:s, meters and actuators. It is possible to configure two Modbus translators, connected to the wireless controllers, as wireless Modbus links between Modbus slaves.

The built in power supply provides +5VDC to the bus at 150 mA.

An external 120 Ohm resistor connected between the two ports is necessary to stabilise the bus..



## Features

- Modbus RTU Master/Slave
- Can connect at least 32 Modbus slave units
- Galvanic isolation of the bus 3750 V
- Powered by connected Smart Controller

# Specifications

## Standards

- Electrical safety testing acc to EN 60730-1
- CE Certified. Complies with applicable European standards regarding electrical safety, EMC immunity and emissions.
- EN 61000
- ETSI EN 301489
- EN 55016

## Power / Performance

- Operating voltage: 12V. Powered by Smart Controller
- Typical power consumption: <0,1W
- Power consumption at full load: 0,8W

## Communication

- Connects to Smart Controller using security protected serial communication.

## Load

- Standard 5V bus voltage.
- Drives at least 32 slaves.
- Both ends of bus should be terminated with 120 Ohm.
- Protection:
  - ESD: 12kV IEC Contact, 15kV HBM
  - EFT: 4kV
  - Surge: 5kV

## Environment

- Climatic withstand according to EN 50491-2
- Ambient operating temperature: -40 to +60 Centigrade.
- Maximum 90% non-condensing relative humidity.

## Connections

- Two pole Wago push-in connector for 0.2 to 1.5 mm<sup>2</sup> solid core wire.
- Raybased standard 6 pole Erni connector for communication to attached Smart Controller. Flat ribbon cable of various lengths are available.
- Designations Modbus A and B

## Dimensions

